




Branch Office :

- Bandung
Jl. Singosari Blok F No. 37
(Cibereum Raya)
Perumahan Parmindo
Bandung - Jawa Barat
Phone : (022) 603 4706
Fax : (022) 603 4706
- Surabaya
Jl. Rungkut Industri I/9
Surabaya
Phone : (031) 842 1415, 842 1515
Fax : (031) 843 8992

Agent PT. Jaya Kencana :

- PT. Duta Kencana Jaya
Taman Majapahit Indah
Jl. Majapahit, Ruko No. 7
Semarang
Phone : (024) 671 1707
Fax : (024) 671 1707
- PT. Seltech Utama Mandiri
Komp. Ruko Rajawali
Jl. Veteran Blok A5
Kota Palembang, Sumatera Selatan 30113
Phone : (0711) 356 317
Fax : (0711) 377727
- PT. Seltech Putera Perkasa
Komplek Pergudangan Avian Blok EE 39
JL. Arengka 2
Kota Pekanbaru, Riau 28292
Phone : (0761) 22270
Fax : (0761) 31658
- PT. Seltech Utama Karya
Komplek Sri Jaya Abadi
Blok J No. 3
P. Batam 29432
Phone : (0778) 456 901
Fax : (0778) 459 794

NOTE :

-  : Branch Office
-  : Agent PT. Jaya Kencana
-  : Technician Bases



Distributor's office :

PT. JAYA KENCANA
Jl. Salemba Raya No. 61 - Jakarta 10440
Phone : 021 - 390 8501
Fax : 021 - 390 8510
Email : sigma@jayakencana.com
Website : www.jayakencana.com



Sigma head office :

6F Two IFC, 10 Gukjegeumyung-ro,
Youngdeungpo-go, Seoul 07326, Korea



ISO 9001
Certificate



ISO 14001
Certificate



ISO 50001
Certificate

Sigma constantly endeavors to improve products.
Please note that the information in this catalog is
subject to change without prior notice.

2025. 11 / Revision 4

The new pinnacle of your elevator

Reaching new heights
<http://sigmaelevator.com>

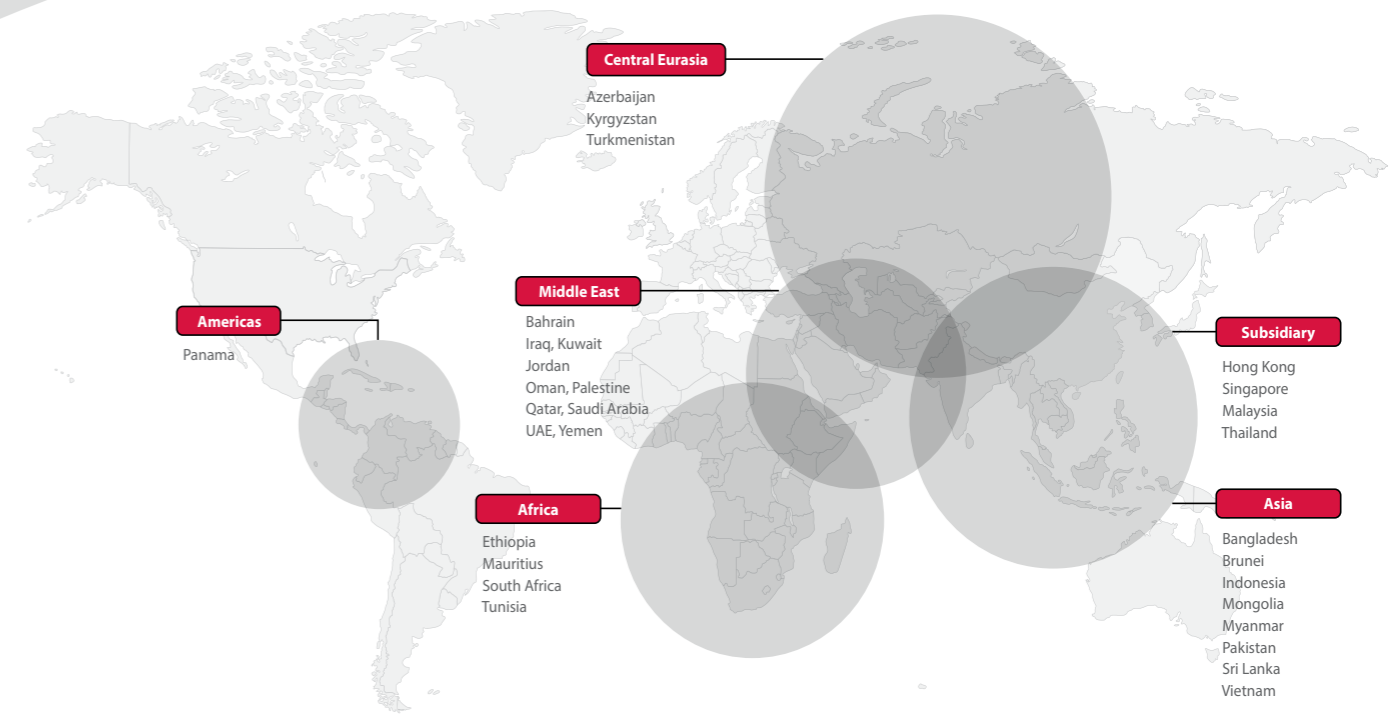




We are committed to being the best in the world

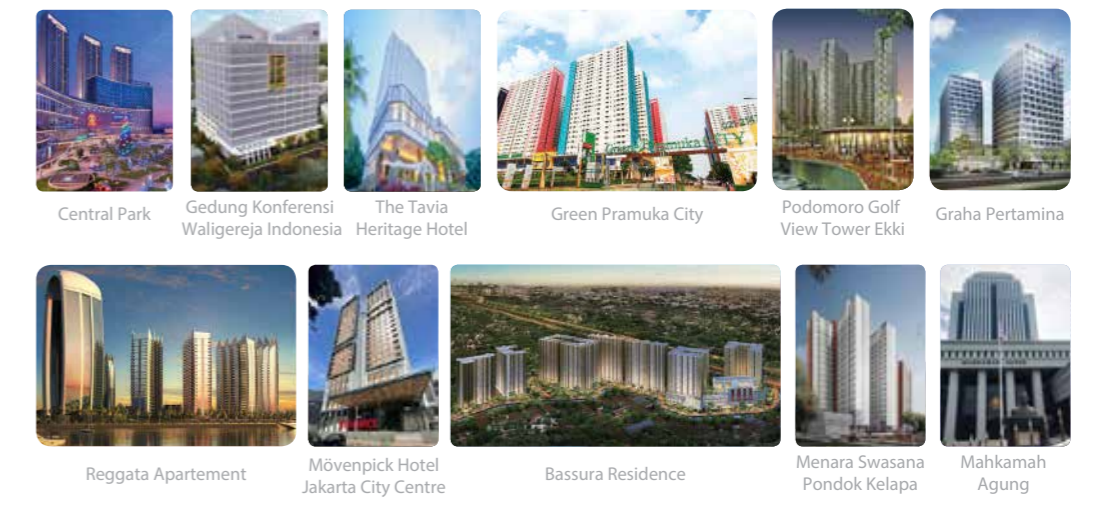
SIGMA GLOBAL NETWORK

Sigma has installed over 160,000 elevators worldwide since 1978

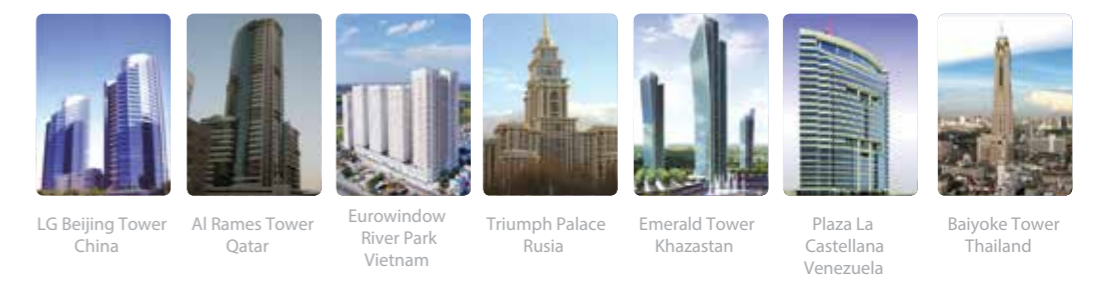


<p>1968~</p> <p>1968 Started to produce elevators and escalators in Korea</p> <p>1978 Started to export under "Goldstar" brand</p> <p>1985 Started to produce gearless elevator (DC Control)</p> <p>1987 Developed and produced VVVF controlled elevator (90, 105 m/min)</p>	<p>1989~</p> <p>1989 Installed new elevator test tower (114m, Changwon Factory)</p> <p>1992 Acquired ISO 9001 Certificate</p> <p>1993 Produced high-speed VVVF controlled elevator (Up to 420m/min)</p> <p>1994 Changed name to "LG"</p>
<p>1996~</p> <p>1996 Acquired ISO 14001 Certificate</p> <p>1997 Established Dalian Factory (with test tower) in China</p> <p>1998 Produced 100,000 units elevators/escalators in Changwon factory</p> <p>1999 Otis acquires LG elevator division</p>	<p>2000~</p> <p>2000 New brand identity for all overseas/export markets "SIGMA"</p> <p>2006 Exported 50,000 units to 70 countries</p> <p>2007 Received Oris President's Award for Growth Initiative</p> <p>2009 Awarded KOTRA (Korea Trade-Investment Promotion Agency) Seal of Excellence</p>
<p>2011~</p> <p>2011 Launched new family of elevators IRIS NV</p> <p>2012 Distributor convention to commemorate the 15th anniversary of Dalian factory</p> <p>2013 Launched IRIS NR elevator specially for Russia & CIS markets Launched IRIS 3 high-rise gearless elevator</p>	<p>2014~</p> <p>2014 Distributor and customer convention in U.A.E Launched Solon NV roped machine roomless elevator</p> <p>2015 EN81 certification for all roped products Asan CLC opened in Asan, Korea</p> <p>2016 Launch of MUSE Dynamic</p> <p>2017 Launch of ACRA/Solon Premium</p> <p>2018 Transition from Dalian factory to Hangzhou factory</p> <p>2019 Opening of Songdo R&D Center (OKMEC), Korea</p> <p>2024 Launch of ACRA™ 2.0 & SOLON® 2.0</p> <p>2026 Launch of MUSE™ 2.0</p>

Indonesian project references :



Worldwide project references :





ISO 9001
Certificate



ISO 14001
Certificate



ISO 50001
Certificate



TOP-CLASS FACTORY

High tech factory with international accreditation enhances the competitiveness of the Sigma brand in the world.



Global engineered

The world's best engineers develop robust and optimized products through stringent quality verification system.

Qualified technology & products

Uniform and safe product supply according to Sigma's product development and proven parts supply process.

Korea flavored aesthetics

Providing trendy and practical products in collaboration with Korea Design Center.

Service excellence

Service excellence is beyond what we provide. It is how we think and act. It is not just "fixing a problem" or performing routine maintenance, but to provide prompt responses to every requests and passion for continuous improvement.

Reliability & Quality

Reliability and safety have been Sigma's foremost concerns. We are constantly pursuing to develop safer and reliable technologies for new products.



Traction Machine
Ultra-compact permanent magnet gearless machine

Control System
Silent operation with non-interference with other electromagnetic devices



Machine room-less

Whether helping busy commuters get to work or delighting people as they shop, your building should be a unique experience for anyone who steps inside. Machine room-less elevator has the style, comfort and speed needed to ensure passengers experience your building to the fullest. With space-saving architectural features that maximize design freedom, this elevator system helps your building stand out.

SOLON® 2.0

SOLON® 2.0 is an innovative roped type machine room-less mid-rise elevator with a highly efficient and compact PMSM (Permanent Magnet Synchronous Motor) gearless traction machine.

MUSE™ 2.0

The MUSE™ 2.0 elevators deliver exceptional performance in a space-saving design. Coated steel belts have a significantly smaller bending radius than wire rope. This engineering breakthrough paved the way for other innovations: our ultra-compact permanent magnet gearless machine is 80% smaller and more efficient than conventional geared machines.

Solon & Muse introduction History



ACRA™ 2.0

ACRA™ 2.0 is a machine room type elevator and it is most popular amongst Sigma products.

Compact PMSM



Our globally designed and manufactured product offers lower vibration and better ride quality, ensuring an efficient and reliable performance. It is certified for both Unintended Car Movement Protection (UCMP) and Ascending Car Overspeed Protection (ACOP), providing enhanced safety

Control System



measures. Additionally, it boasts more reliable and superior EMC performance, alongside reduced brake noise for a quieter operation.

Machine Room

COMPACT MACHINE ROOM CONFIGURATION

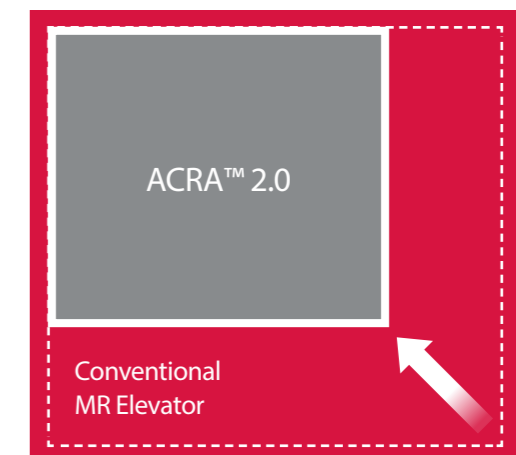
The ACRA™ 2.0 elevator can be configured in a compact design that takes up no additional space beyond the hoistway, which not only reduces construction costs but also optimizes the use of rooftop area.

⊕ COMPACT DESIGN

Mini machine room technology eliminates machine room space and cost for greater architectural design freedom.

⊕ MAXIMIZED SPACE SAVINGS

Compact PMSM allows a smaller machine sheave, reducing machine size and raising efficiency.



Main Safety Components



Safety gear

Sigma Standard
24 times of System Braking

EN81 Standard
3 times of System Braking



Overspeed governor

Sigma Standard
12 times of Dynamic Activation

EN81 Standard
3 times of Dynamic Activation



Buffer

Sigma Standard
100 times of Impact Test

EN81 Standard
2 times of Impact Test

Space

The compact machine room provides architects with greater design flexibility and building owners with more rentable space.

Comfort

Our systems minimize noise and vibration and render the elevator's movement barely perceptible, giving passengers what they're looking for – a quiet, comfortable ride. The elevator's sleek modern design enhances the experience while complementing your building's interior.

Form and function in perfect harmony

For the people who live and work in your building, the elevator isn't just a means of transportation. It's a place where they spend important moments of their day. The Sigma's interior helps enrich these moments with pleasing lines and textures, mirrored surfaces, soft LED lighting and floors tiled in marble and other durable materials.



Ultra-compact Permanent Magnet Gearless Machine

No oil, less vibration



Controller Regenerative Drive System

Standard for MUSE™2.0



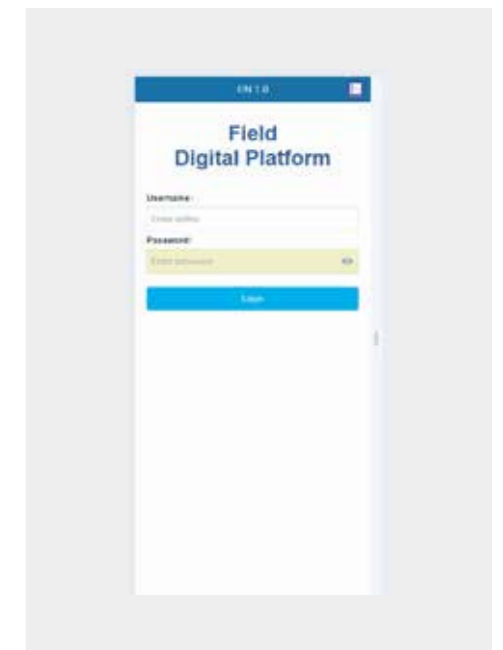
Wide range of Finishes & Well-being

Innovative interface which fits the customers hygienic needs



Simple Installation and Maintenance

Digital tool for installation





Car Design

Classic

The Classic type is a timeless design that offers reliable and efficient performance. With its simple yet elegant style, it's the perfect choice for any building.

Cozy

The Cozy type is designed to provide a comfortable and inviting experience for passengers. Its warm lighting and plush interior make it the perfect choice for our customers.

Prestige

The Prestige type is the epitome of luxury and sophistication. Its sleek and modern design is sure to impress, and its advanced technology ensures a smooth and quiet ride.

Pinnacle

The Pinnacle type is the ultimate choice for customers that are meant to complement the overall architectural style of the building as well as giving passengers a riding comfort.



DESIGN

Classic 2401



Front View



Rear View

Specification

Ceiling	CS_L001 (RAL7038)
COP	COP09A
CPI	LED5.5
COP Button	BR018B
Car Wall Finish	Front Panel · Pearl light champagne painted RAL140 Side Panel (from front to rear) · Pearl light champagne painted RAL140 Rear Panel (from left to right) · Pearl light champagne painted RAL140_MPL · White mirror patchwork · Pearl light champagne painted RAL140_MPL
Car Door Panel	Pearl light champagne painted RAL140
Handrail	4900S_C 2 Side
Flooring	DE313

i The actual product can be different (changed) depending on design
Car wall image can be different (changed) depending on capacity

DESIGN

Classic 2402



Front View



Rear View

Specification

Ceiling	CE-43 (Mirror St.St)
COP	COP09A
CPI	LED5.5
COP Button	BR018B
Car Wall Finish	Front Panel · Hairline St. St. Side Panel (from front to rear) · Hairline St. St. Rear Panel (from left to right) · Hairline St. St.
Car Door Panel	Hairline St. St.
Handrail	4900B_A 2 side
Flooring	DE103

i The actual product can be different (changed) depending on design
Car wall image can be different (changed) depending on capacity

DESIGN

Cozy 2203



Front View

Specification

Ceiling	CE_301 (Hairline St. St.)
COP	COP07
CPI	LED5.5
COP Button	BR016B
Car Wall Finish	Front Panel · Hairline St. St. Side Panel (from front to rear) · EW2-085 Etched Hairline St.St Rear Panel (from left to right) · EW2-085 Etched Hairline St.St
Car Door Panel	EH1-085 Etched Hairline St.St
Handrail	4900_A 3 Side
Flooring	DE313



Rear View

1 The actual product can be different (changed) depending on design
Car wall image can be different (changed) depending on capacity

DESIGN

Cozy 2204



Front View

Specification

Ceiling	4605L (Mirror St.St)
COP	COP09A (Mirror St.St)
CPI	LED5.5
COP Button	BR018
Car Wall Finish	Front Panel · Mirror St. St. Side Panel (from front to rear) · Mirror St.St · EW4-034 Etched Mirror St.St · Mirror St.St. Rear Panel (from left to right) · Mirror St.St · EW4-034 Etched Mirror St.St · Mirror St.St.
Car Door Panel	EH3-034 Etched Mirror St.St
Handrail	4900R_B 3 Side
Flooring	DT03



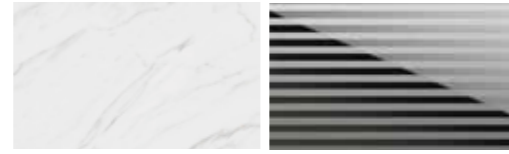
Rear View

1 The actual product can be different (changed) depending on design
Car wall image can be different (changed) depending on capacity

DESIGN

Cozy 2205

Special Finish



CG-10 White Marble
Stone Color Metal

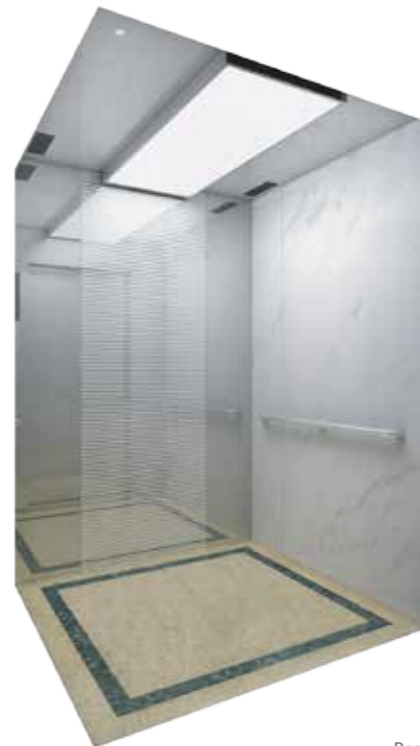
SK-2 Etched
Mirror St.St

Specification

Ceiling	CE_301 (Mirror St.St)
COP	COP07 (Hairline St.St)
CPI	TFT7
COP Button	BR015
Car Wall Finish	Front Panel · Hairline St.St Side Panel (from front to rear) · CG-10 White Marble Stone Color Metal Rear Panel (from left to right) · Mirror St.St · SK-2 Etched Mirror St.St · Mirror St.St
Car Door Panel	Hairline St.St
Handrail	4900R_C 2 Side
Flooring	DT03



Front View



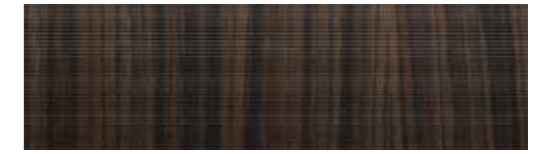
Rear View

1 The actual product can be different (changed) depending on design
Car wall image can be different (changed) depending on capacity

DESIGN

Cozy 2206

Special Finish



CG-4 Ebony Color Metal

Specification

Ceiling	4605L (Painted RAL7048PL)
COP	COP07 (Mirror St.St)
CPI	TFT7
COP Button	BR015B
Car Wall Finish	Front Panel · Hairline St.St Side Panel (from front to rear) · Hairline St.St · CG-4 Ebony Color Meta · Hairline St.St Rear Panel (from left to right) · Hairline St.St · Mirror St.St · Hairline St.St
Car Door Panel	EH1-085 Etched Hairline St.St
Handrail	4900_B 3 Side
Flooring	DE103



Front View



Rear View

1 The actual product can be different (changed) depending on design
Car wall image can be different (changed) depending on capacity

DESIGN

Cozy 2207

Special Finish



CG-4 Ebony
Color Metal

CG-5 Elegant White-
cloth Color Metal

Specification

Ceiling	CS-L001 (Painted RAL120_MPL)
COP	COP07 (Hairline St.St)
CPI	TFT7
COP Button	BR015

- Car Wall Finish**
- Front Panel**
- Hairline St.St
- Side Panel (from front to rear)**
- Mirror St.St
 - CG-4 Ebony Color Metal
 - Mirror St.St
- Rear Panel (from left to right)**
- Mirror St.St
 - CG-5 Elegant White-cloth Color Metal
 - Mirror St.St

Car Door Panel	Hairline St.St
Handrail	4900_B 1 Side
Flooring	DE103



Front View



Rear View

1 The actual product can be different (changed) depending on design
Car wall image can be different (changed) depending on capacity

DESIGN

Cozy 2208

Special Finish



RAL120_MPL Warm
Grey Pearl Painted Steel

CG-1 Burma Teak
Color Metal

Specification

Ceiling	CS-L001 (Painted RAL7038)
COP	COP07 (Hairline St.St)
CPI	LED5.5
COP Button	BR016

- Car Wall Finish**
- Front Panel**
- Hairline St.St
- Side Panel (from front to rear)**
- Mirror St.St
 - RAL120_MPL Warm Grey Pearl Painted steel
 - Mirror St.St
- Rear Panel (from left to right)**
- Mirror St.St
 - CG-1 Burma Teak Color Metal
 - Mirror St.St

Car Door Panel	Hairline St.St
Handrail	4900_A 3 Side
Flooring	DE103



Front View



Rear View

1 The actual product can be different (changed) depending on design
Car wall image can be different (changed) depending on capacity

DESIGN

Cozy 2209



Front View

Special Finish



RAL120_MPL Warm
Grey Pearl Painted Steel

CG-1 Burma Teak
Color Metal

Specification

Ceiling	CS-L001 (Painted RAL7038)
COP	COP09A (Hairline St.St)
CPI	LED5.5
COP Button	BR018B

Car Wall Finish	Front Panel
	· Hairline St.St
	Side Panel (from front to rear)
	· RAL120_MPL Warm Grey Pearl Painted steel · CG-1 Burma Teak Color Metal · RAL120_MPL Warm Grey Pearl Painted steel
Rear Panel (from left to right)	· RAL120_MPL Warm Grey Pearl Painted steel
	· STS MR
	· RAL120_MPL Warm Grey Pearl Painted steel
	· RAL120_MPL Warm Grey Pearl Painted steel

Car Door Panel	Hairline St.St
Handrail	4900_A 3Side
Flooring	DE313



Rear View

1 The actual product can be different (changed) depending on design
Car wall image can be different (changed) depending on capacity

DESIGN

Prestige 2210



Front View

Special Finish



KB-19 Color Metal

Specification

Ceiling	4603L (Mirror St.St)
COP	COP09A (Hairline St.St)
CPI	LED5.5
COP Button	BR018B

Car Wall Finish	Front Panel
	· Hairline St.St
	Side Panel (from front to rear)
	· Mirror St.St · KB-19 Color Metal · KB-19 Color Metal
Rear Panel (from left to right)	· KB-19 Color Meta
	· Mirror St.St
	· KB-19 Color Metal
	· KB-19 Color Metal

Car Door Panel	EH3-034 Etched Hairline St.St
Handrail	4900_A 3Side
Flooring	DT03



Rear View

1 The actual product can be different (changed) depending on design
Car wall image can be different (changed) depending on capacity

DESIGN

Prestige 2211

Special Finish



Champagne Gold
Hairline St.St

Champagne Gold
Mirror St.St

Specification

Ceiling	4603L (Champagne Gold Mirror St. St.)
COP	COP09A (Hairline St.St)
CPI	LED5.5
COP Button	BR018B
Car Wall Finish	Front Panel · Hairline St.St Side Panel (from front to rear) · Champagne Gold Hairline St.St · Champagne Gold Mirror St.St · Champagne Gold Hairline St.St Rear Panel (from left to right) · Champagne Gold Hairline St.St · Etched Champagne Gold Mirror St. St SHHM-XSK06 · Champagne Gold Hairline St.St
Car Door Panel	Hairline St.St
Handrail	4900F 3 Side
Flooring	DT03



Front View



Rear View

1 The actual product can be different (changed) depending on design
Car wall image can be different (changed) depending on capacity

DESIGN

Prestige 2212

Special Finish



CG-1 Burma Teak
Color Metal

Bronze Hairline St.St

Specification

Ceiling	CE_302 (Painted RAL7048PL)
COP	COP09A (Hairline St.St)
CPI	LED5.5
COP Button	BR018
Car Wall Finish	Front Panel · Hairline St.St Side Panel (from front to rear) · CG-1 Burma Teak Color Metal Rear Panel (from left to right) · Bronze Hairline St.St · Etched Mirror St. St SHHM-SK03 · Bronze Hairline St.St
Car Door Panel	Hairline St.St
Handrail	4900B_A 2 Side
Flooring	DT03



Front View



Rear View

1 The actual product can be different (changed) depending on design
Car wall image can be different (changed) depending on capacity

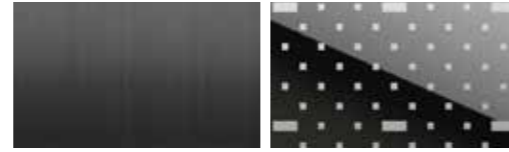
DESIGN

Pinnacle 2213



Front View

Special Finish



Titanium Black
Hairline St.St

Titanium black Mirror
Etched St.St EW2-082

Specification

Ceiling	4604L (Painted RAL9005)
COP	COP07 (Hairline St. St)
CPI	TFT7
COP Button	BR016B

Car Wall Finish

- Front Panel**
- Titanium Black Hairline St.St
- Side Panel (from front to rear)**
- Titanium Black Hairline St.St
 - Titanium Black Mirror Etched St.St EW2-082
 - Titanium Black Hairline St.St
- Rear Panel (from left to right)**
- Titanium Black Hairline St.St
 - Titanium Black Mirror Etched St.St EW2-082
 - Titanium Black Hairline St.St

Car Door Panel Titanium black Mirror Etched St.St EH1-082

Handrail 4900R_C 3 Side

Flooring DT01



Rear View

i The actual product can be different (changed) depending on design
Car wall image can be different (changed) depending on capacity

DESIGN

Pinnacle 2214



Front View

Special Finish



Bronze
Hairline St.St

CG-13 Cow Leather
Texture Color Metal

Specification

Ceiling	CE_302 (Mirror St.St)
COP	COP07 (Hairline St.St)
CPI	LED5.5
COP Button	BR016

Car Wall Finish

- Front Panel**
- Bronze Hairline St.St
- Side Panel (from front to rear)**
- Bronze Hairline St.St
 - CG-13 Cow Leather Texture Color Metal
 - Bronze Hairline St.St
- Rear Panel (from left to right)**
- Bronze Hairline St.St
 - EW2-059 Etched Mirror St.St
 - Bronze Hairline St.St

Car Door Panel EH1-059 Etched Mirror St.St

Handrail 4900R_B 3Side

Flooring DT03



Rear View

i The actual product can be different (changed) depending on design
Car wall image can be different (changed) depending on capacity

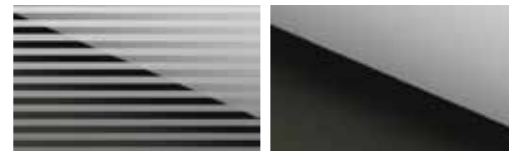
DESIGN

Pinnacle 2215



Front View

Special Finish



SK-2 Etched
Mirror St.St

Titanium Black
Mirror St.St

Specification

Ceiling	4604L (Painted RAL9005)
COP	COP07 (Hairline St. St)
CPI	TFT7
COP Button	BR016B

- Car Wall Finish**
- Front Panel**
 - Hairline St.St
 - Side Panel (from front to rear)**
 - Titanium Black Mirror St.St
 - SK-2 Etched Mirror St.St
 - Titanium black Mirror St.St
 - Rear Panel (from left to right)**
 - Titanium Black Mirror St.St
 - SK-2 Etched Mirror St.St
 - Titanium Black Mirror St.St

Car Door Panel	Hairline St.St
Handrail	4900R_C 3 Side
Flooring	DT03



Rear View

1 The actual product can be different (changed) depending on design
Car wall image can be different (changed) depending on capacity

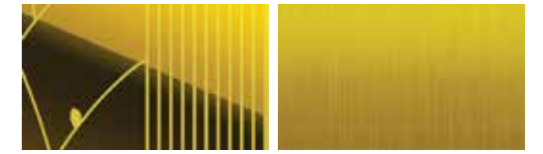
DESIGN

Pinnacle 2216



Front View

Special Finish



Titanium Mirror Etched
St.St EW2-085

Titanium
Hairline St.St

Specification

Ceiling	4603L (Champagne gold Mirror St. St.)
COP	COP09A (Hairline St.St)
CPI	LED5.5
COP Button	BR018B

- Car Wall Finish**
- Front Panel**
 - Titanium Hairline St.St
 - Side Panel (from front to rear)**
 - Titanium Hairline St.St
 - Titanium Mirror Etched St.St EW2-085
 - Titanium Hairline St.St
 - Rear Panel (from left to right)**
 - Titanium Hairline St.St
 - Titanium Mirror Etched St.St EW2-085
 - Titanium Hairline St.St

Car Door Panel	Titanium Mirror Etched St.St EH1-085
Handrail	4900R_E 3 Side
Flooring	DT01



Rear View

1 The actual product can be different (changed) depending on design
Car wall image can be different (changed) depending on capacity

DESIGN

Pinnacle 2217



Front View

Special Finish



RAL9005 Black Matt
Painted Steel

RAL9003HL
Coagulation White
Highlights Painted Steel

Specification

Ceiling	4607L (Painted RAL7048PL)
COP	COP07 (Hairline St. St)
CPI	TFT7
COP Button	BR016B
Car Wall Finish	Front Panel · Hairline St.St Side Panel (from front to rear) · RAL9005 Black Matt Painted Steel · Titanium black Mirror St.St · Titanium black Mirror St.St Rear Panel (from left to right) · RAL9003HL Coagulation White Highlights Painted Steel
Car Door Panel	Hairline St.St
Handrail	4900_A 3 Side
Flooring	DE313



Rear View

i The actual product can be different (changed) depending on design
Car wall image can be different (changed) depending on capacity

DESIGN

Standard



Front View



Rear View

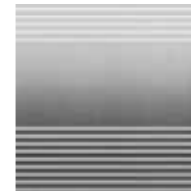
Specification

Ceiling	CS-L001 (Painted RAL120_3)
COP	COP09
CPI	LED5.5
COP Button	BR017
Car Wall Finish	Front Panel · Hairline St. St. Side Panel (from front to rear) · Hairline St. St. Rear Panel (from left to right) · Hairline St. St.
Car Door Panel	Hairline St. St.
Handrail	4900_A 3 Side
Flooring	DT03

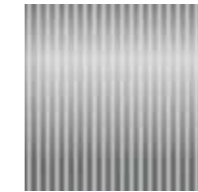
i The actual product can be different (changed) depending on design
Car wall image can be different (changed) depending on capacity



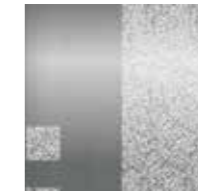
Etching



EH3-034



EH1-059



EH1-067



EH1-085



Paint



RAL7038
Agate Grey



RAL6019
Pastel Green



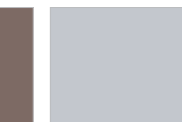
RAL1036PL
Pearl Gold
(Pearly-lustre)



RAL9022PL
Pearl Light Grey
(Pearly-lustre)



RAL8024
Beige Brown



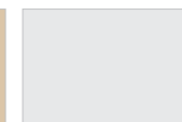
RAL7035
Light Grey



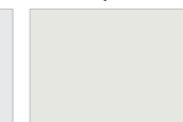
RAL9002
Grey White



RAL1001
Beige



RAL110_1HL
Pearl White
(Highlight)



RAL9010
Pure White



RAL1015
Light Ivory



RAL7047
Telegrey



RAL110_2SL
Cold Grey
(Scabriculous)

i The actual product can be different (changed) depending on design

Standard



Entrance	Starting Floor
Type	J101 narrow jamb
Jamb Finish	Hairline St.St
Door Finish	Hairline St.St
Hall Fixtures	HF09_N
Hall Position Indicator	HF09_LED
Button	BR017B

Entrance	Typical Floor
Type	J101 narrow jamb (Typical Floor)
Jamb Finish	Hairline St.St
Door Finish	Hairline St.St
Hall Fixtures	HF09_LED
Button	BR017B

Optional



Entrance	Starting Floor
Type	J411 full tapered jamb with transom panel
Jamb Finish	Hairline Stainless Steel
Door Finish	Etched Hairline St.St (EH1-085)
Hall Fixtures	HF07_N
Hall Position Indicator	HPI07_LED
Button	BR015B

Entrance	Typical Floor
Type	J101 narrow jamb
Jamb Finish	Hairline St.St
Door Finish	Hairline St.St and Glass
Hall Fixtures	HF09_LED
Button	BR017B

! The actual product can be different (changed) depending on design

Ceiling

Standard



CS_L001

Description :
 - Thickness 0 mm
 - Material :
 Painted Steel | Standard Color : RAL120_3

More spacious and comfortable



Up to 175mm

Painted Steel for Ceiling



Option



CE-43

Description :
 - Thickness 100 mm
 - Material : Mirror Stainless Steel



CE_302

Description :
 - Thickness 100 mm
 - Material :
 Painted Steel | Standard Color :
 RAL7048PL



CE_301

Description :
 - Thickness 70 mm
 - Material :
 Painted Steel | Standard Color :
 RAL7048PL



4605L

Description :
 - Thickness 100 mm
 - Material :
 Painted Steel | Standard Color :
 RAL7048PL



4606L

Description :
 - Thickness 0 mm
 - Material : Hairline stainless steel



4603L

Description :
 - Thickness 110 mm
 - Material : Hairline stainless steel



4607L

Description :
 - Thickness 50 mm
 - Material : Hairline stainless steel



4604L

Description :
 - Thickness 175 mm
 - Material :
 Painted Steel | Standard Color :
 RAL9005



CE209A

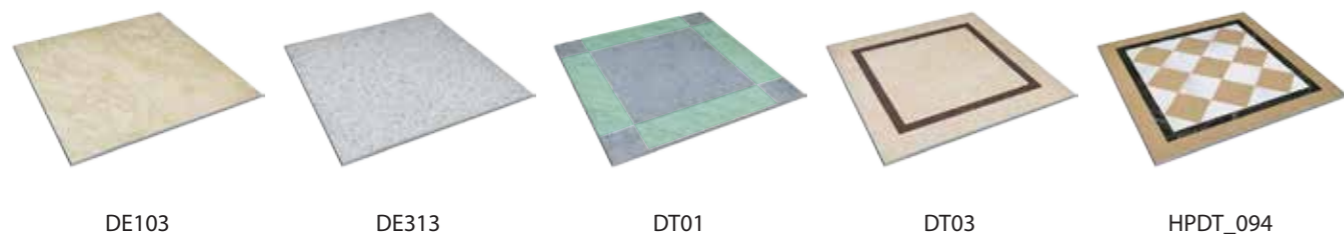
Description :
 - Thickness 150 mm
 - Material : Hairline stainless steel

! The actual product can be different (changed) depending on design

Handrails (Option)



Floorings(PVC) (Standard)



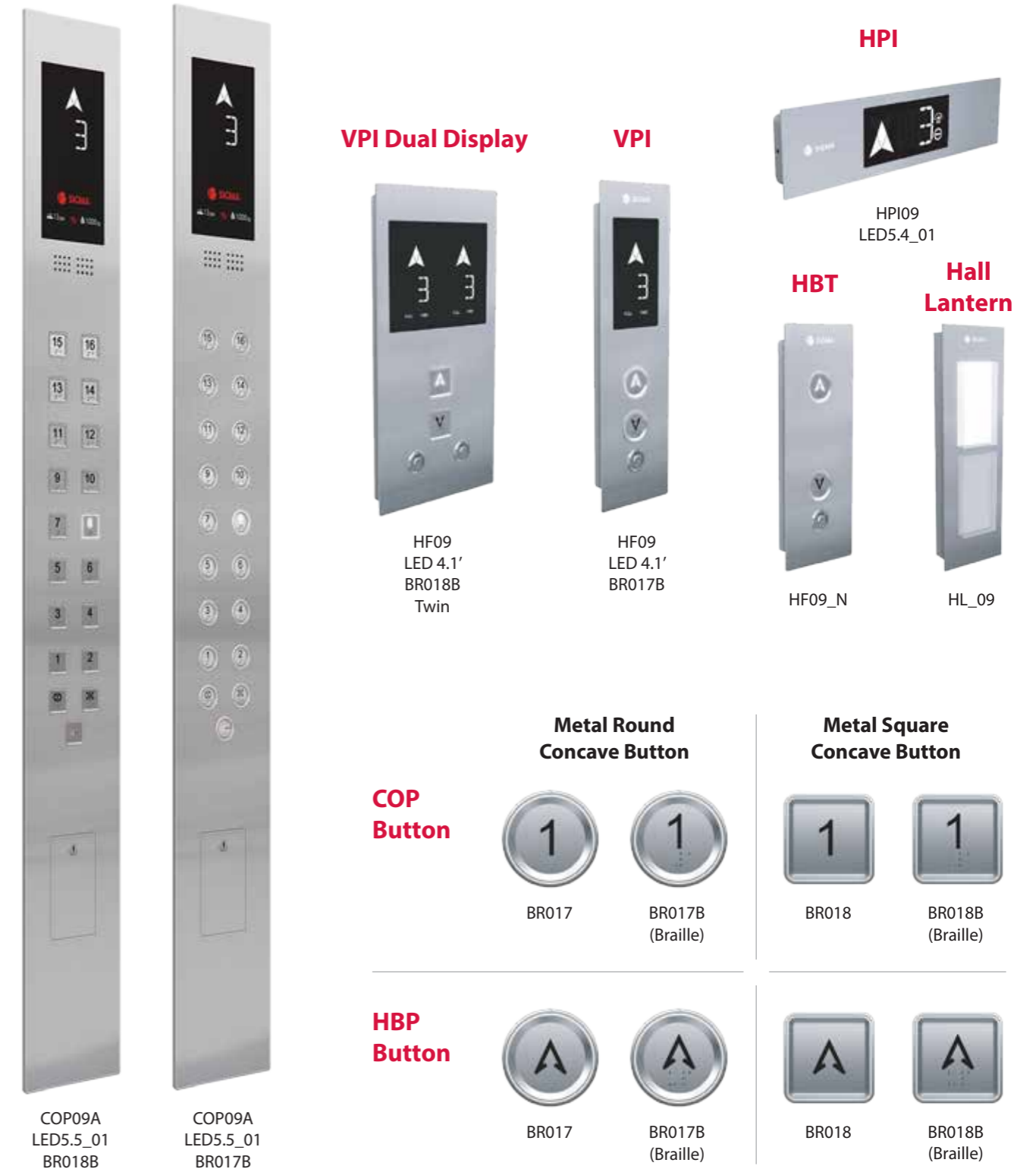
Decotile Type : _____

Granite / Marble by Other with Floor Thickness :

10 mm 15 mm 20 mm 25 mm

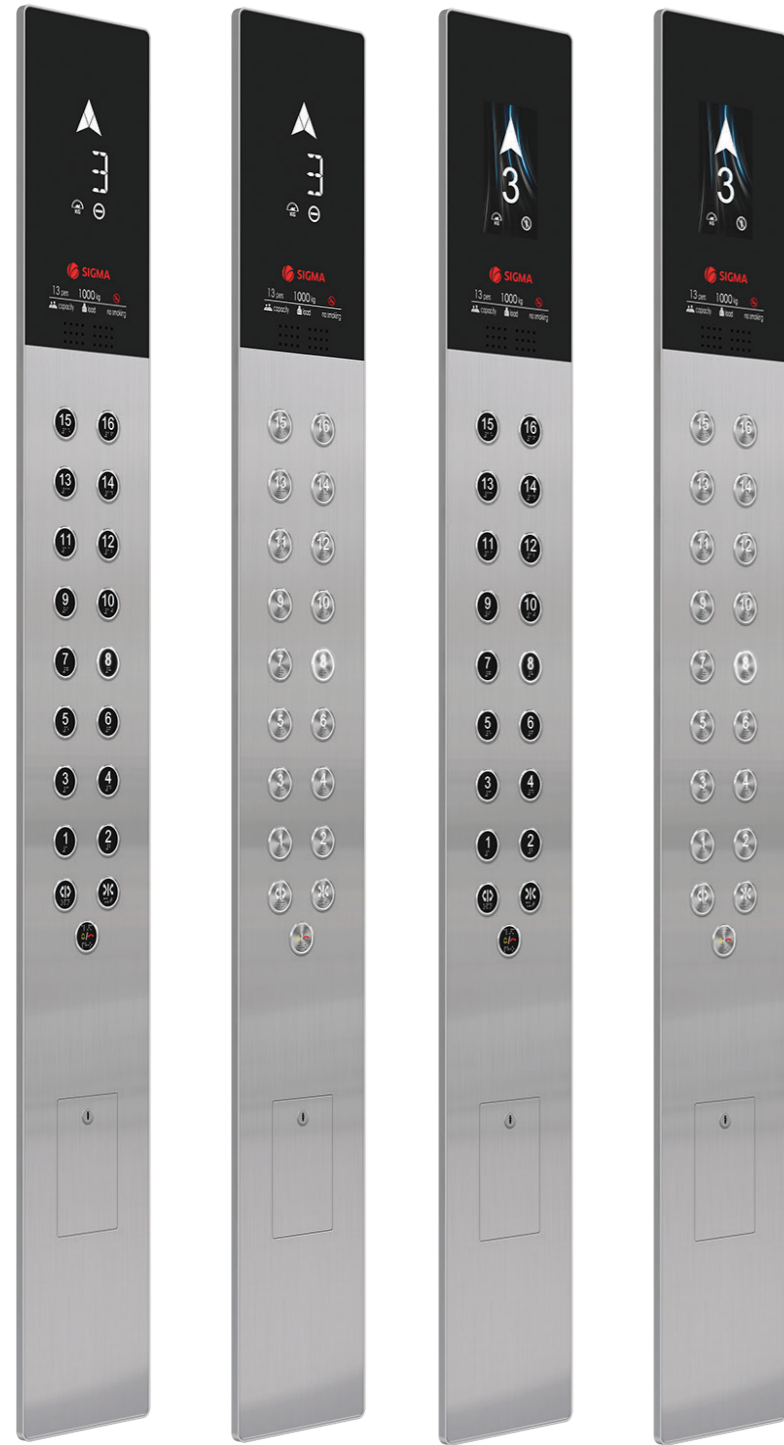
Car Weight Allowance : _____ Kg

FTYP09(Standard, LED Type)



i This rendering was created based on EN81-1 code. When EN81-20 code is applied, the contents on the COP may change.

FTYP07(Option, LED & TFT Type)



COP07 LED5.5_01 BR015B
 COP07 LED5.5_01 BR016B
 COP07 TFT7_01 BR015B
 COP07 TFT7_01 BR016B

COP Display Type



LED5.5_01
 TFT7_01

VPI Dual Display



HF07 LED 4.1' BR015B Twin
 HF07 TFT 4.3' BR015B Twin



HF07 LED 4.1' BR016B Twin
 HF07 TFT 4.3' BR016B Twin

HPI



HPI07 LED5.4_01



HPI07 TFT4.3_01

VPI



HF07 TFT 4.3' BR015B



HF07 LED 4.1' BR015B



HF07 TFT 4.3' BR016B



HF07 LED 4.1' BR016B

Handicapped COP



HCOP07

HBT



HF07_N

Hall Lantern



HL_07

Glass Round Button

COP Button



BR015
 BR015B (Braille)

Metal Round Button



BR016
 BR016B (Braille)

HBP Button



BR015
 BR015B (Braille)



BR016
 BR016B (Braille)

! This rendering was created based on EN81-1 code. When EN81-20 code is applied, the contents on the COP may change.

FTYPS1 (Option, LCD Type)



COP Display Type



UI_S1
Black Screen

UI_S2
Silver Screen



UI_S3
Brown Screen

UI_S4
White Screen

COPS1
LCD UI_S1
BR015B

COPS1
LCD UI_S2
BR016B

COPS1
LCD UI_S3
BR017B

COPS1
LCD UI_S4
BR018B

VPI



HBPS1
LED
BR34M

HBPS1
LED
BS34JB

VPI Dual Display



HBPS1
LED
BR34MB
TWIN

HBPS1
LED
BS34JB
TWIN

COP Button

Glass Round Button



BR015

BR015B
(Braille)

Metal Round Concave Button



BR017

BR017B
(Braille)

Metal Round Button



BR016

BR016B
(Braille)

Metal Square Concave Button



BR018

BR018B
(Braille)

HBP Button

Inching Stainless Steel Round Button



BR34M

BR34MB
(Braille)

Inching Stainless Steel Square Button



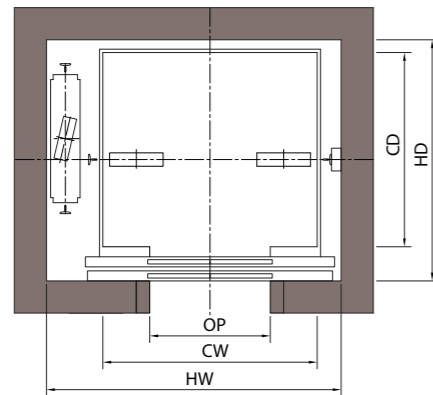
BS34J

BS34JB
(Braille)

Layout Drawing

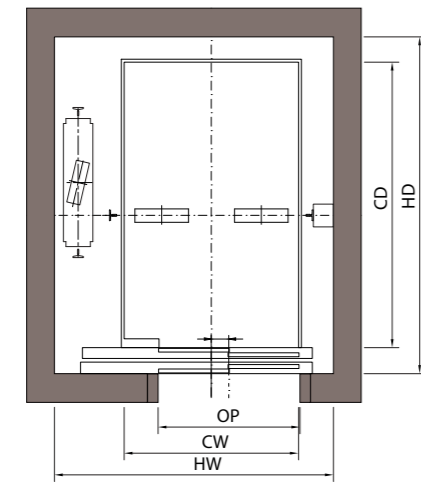
[Hoistway Plan]

Center Opening

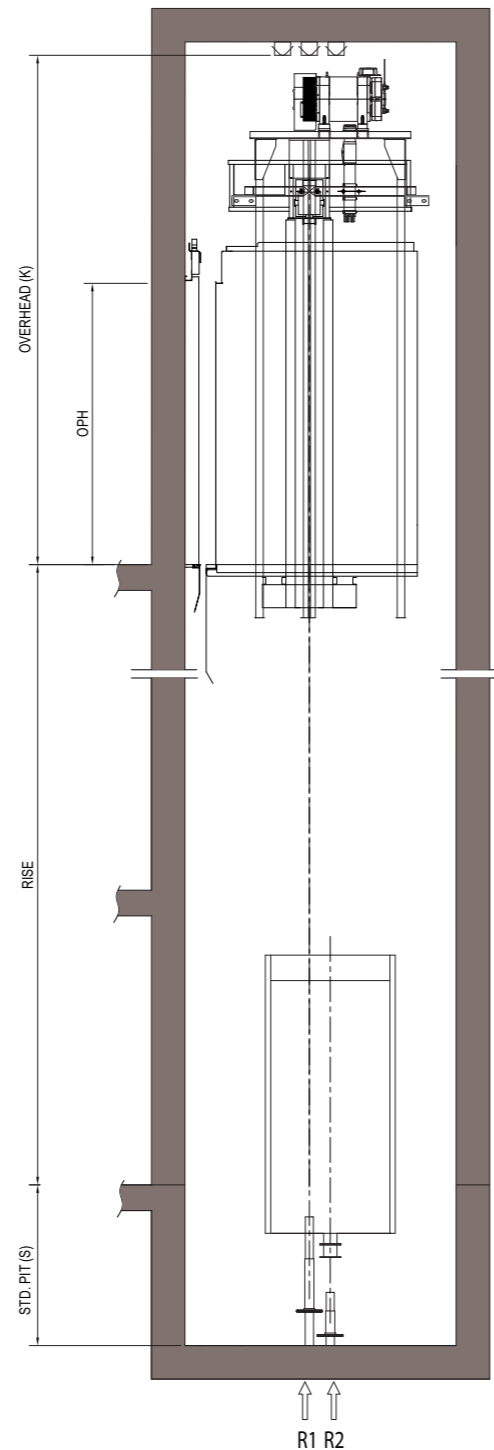


[Hoistway Plan]

Side Opening



[Hoistway Section]



Overhead, Pit

Speed(m/s)	Capacity(kg)	Overhead(mm)	Pit Depth (mm)
1.0	450 ~ 1050kg	4000	1250
1.5		4200	1300
1.75		4250	1400

Based on : RECES=3; CH=2400;
 When V=1m/s : CARRUNBY=150,CWTRUNBY=150;
 When 1m/s < V ≤ 1.75m/s : CARRUNBY=200,CWTRUNBY=200

Layout Dimension

(Unit : mm)

Speed (m/s)	Capacity		Opening Width (mm)	Opening Type	Car Size		Hoistway Size		Reaction Load (kN)	
	Person	Load(kg)			CW	CD	HW	HD	Pit	
									R1 (Car)	R2 (CWT)
1.0~1.75	6	450	700	CLD	1000	1200	1700	1600	60.8	51.6
	7	550	800		1100	1250	1850	1650	65.4	54.2
	8	630	800		1100	1400	1850	1800	71.3	58.5
	10	800	800		1350	1350	1950	1700	80.4	64.1
	12	900	800		1500	1400	2100	1800	87.4	69.1
	13	1000	900		1600	1450	2200	1800	94.1	72.7
1.0~1.75	14	1050	900	TLD	1600	1450	2200	1800	94.1	72.7
	6	450	700		1000	1200	1650	1650	60.8	51.6
	7	550	800		1100	1250	1750	1700	65.4	54.2
	8	630	800		1100	1400	1750	1850	71.3	58.5
	10	800	800		1200	1450	1850	1900	80.4	64.1
	12	900	900		1250	1600	1900	2050	87.4	69.1
1.0~1.75	13	1000	900		1250	1800	1900	2250	94.1	72.7
	14	1050	900		1300	1800	1950	2250	94.1	72.7

Power Supply Plan

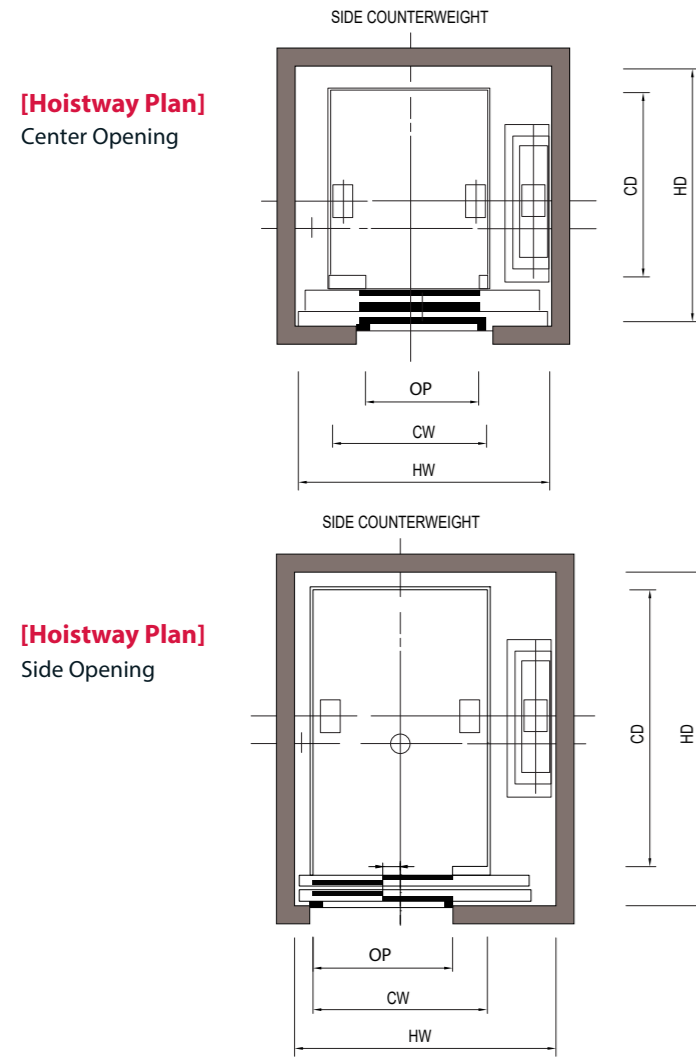
(380V, 3Ph)

Speed (m/s)	Capacity		Motor Power Capacity (kW)	Elevator Current (A)		Heat Dissipation (kcal/H)
	Person	Capacity(kg)		Rated	Starting	
1.0	6	450	5.6	9.0	15.4	639
	7	550	5.6	10.2	17.1	769
	8	630	5.6	12.6	17.8	1,027
	10	800	5.6	15.0	20.7	1,257
	12	900	6.7	16.3	22.4	1,339
	13	1000	6.7	17.5	23.4	1,374
1.5	14	1050	6.7	18.2	24.0	1,438
	6	450	8.3	11.3	21.2	758
	7	550	8.3	13.1	23.7	925
	8	630	8.3	16.5	24.1	1,178
	10	800	8.3	19.9	27.7	1,461
	12	900	10.0	21.6	29.9	1,488
1.75	13	1000	10.0	23.6	32.1	1,642
	14	1050	10.0	24.5	33.1	1,719
	6	450	9.7	12.4	23.8	813
	7	550	9.7	14.5	26.7	992
	8	630	9.7	18.6	27.4	1,359
	10	800	9.7	22.5	31.7	1,690
1.75	12	900	11.7	24.5	34.2	1,722
	13	1000	11.7	26.8	36.9	1,901
	14	1050	11.7	28.0	38.0	1,991

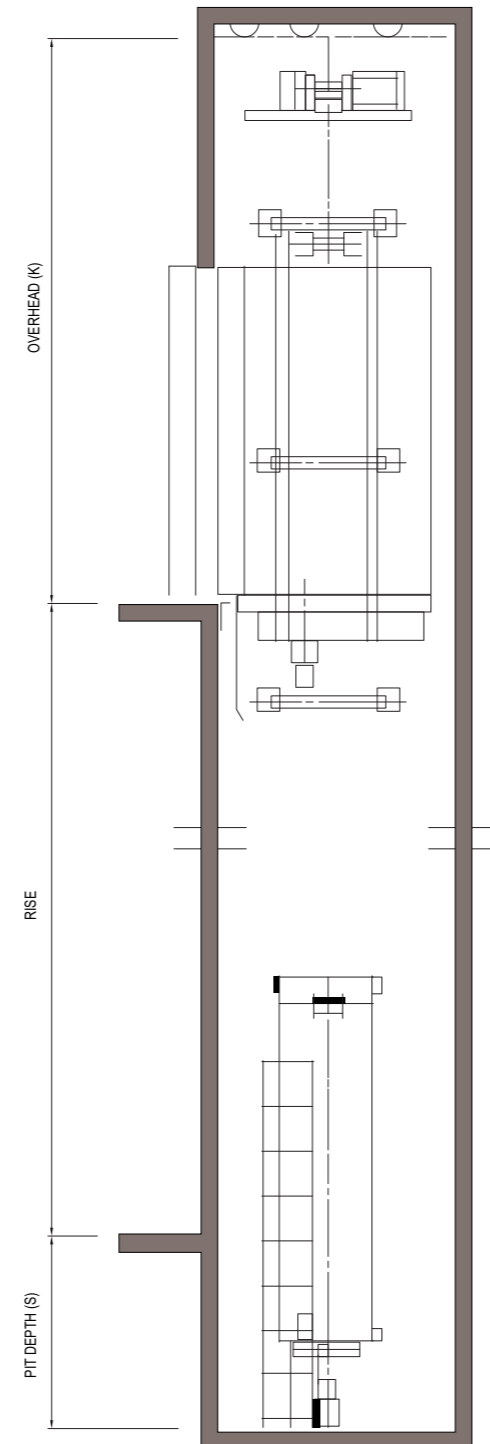
Note : When power supply is not 380V, current calculated by below formula.
 $I' = I \cdot 380 / U'$
 I' : System Current @ Power Supply Voltage that is not 380V

I : 380V Rated Current/Start Current
 U' : Power Supply Voltage that is not 380V

Layout Drawing



[Hoistway Section]



Overhead, Pit

Duty load (kg)	Speed (m/s)	Overhead Minimum (mm)	Pit Depth (mm)	Maximum rise (m)
1150-1600	1	4100	1250	50
	1.5	4200	1360	80
	1.75	4250	1400	96
1150	2	4400	1700	110
	2.5	4600	1850	110
1350-1600	2	4400	1700	120
	2.5	4600	1850	120

Based on : RECES=3; CH=2400;
 When V=1m/s : CARRUNBY=150,CWTRUNBY=150;
 When 1m/s <V<=1.75m/s : CARRUNBY=200,CWTRUNBY=200

Layout Dimension

(Unit : mm)

Person	Capacity Load(kg)	Speed (m/s)	Opening Width (mm)	Opening Type	Car Size		Hoistway Size		Reaction Load (kN)	
					CW	CD	HW	HD	Pit	
						R4	R5			
15	1150	1.0 ~ 1.75	1000	CLD	1750	1450	2500	2100	127.0	103.0
		2.0 ~ 2.5							139.0	115.0
18	1350	1.0 ~ 1.75	1100		2000	1500	2750	2100	146.0	118.0
		2.0 ~ 2.5							154.0	126.0
21	1600	1.0 ~ 1.75	1100		2000	1700	2750	2150	165.0	132.0
		2.0 ~ 2.5							171.0	138.0
15	1150	1.0 ~ 1.75	1000	TLD	1150	2200	1900	2700	127.0	103.0
		2.0 ~ 2.5							139.0	115.0
18	1350	1.0 ~ 1.75	1100		1250	2300	2000	2750	146.0	118.0
		2.0 ~ 2.5							154.0	126.0
21	1600	1.0 ~ 1.75	1100		1450	2350	2300	2800	165.0	132.0
		2.0 ~ 2.5							171.0	138.0

Power Supply Plan

(380V, 3Ph)

Person	Capacity Load(kg)	Speed (m/s)	Motor Capacity (kW)	Elevator Current (A)		Heat Dissipation (kcal/H)
				Rated	Starting	
15	1150	1.0	7.7	17.4	22	1118
		1.5	13.5	25.3	31.5	1423
		1.75	13.5	27.3	33.8	1551
		2.0	25.4	36.2	43.8	1680
		2.5	25.4	43.8	53.4	2078
18	1350	1.0	10	21.8	24.3	1350
		1.5	17.8	31.3	37	1534
		1.75	17.8	33.9	40.1	1670
		2.0	25.4	41.2	49.6	1945
		2.5	25.4	50.1	60.6	2410
21	1600	1.0	10	25.6	28.4	1616
		1.5	17.8	37.8	44.3	1865
		1.75	17.8	41	48.1	2032
		2.0	25.4	47.5	56.8	2277
		2.5	25.4	57.9	69.5	2825

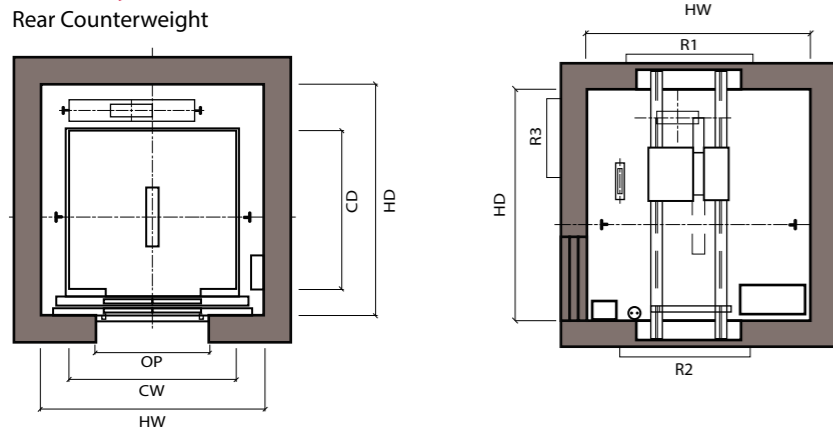
Note : When power supply is not 380V, current is calculated by the following formula.
 $I' = I * 380 / U$
 I': System Current @ Power Supply Voltage that is not 380V

I: 380V Rated Current/Start Current
 U: Power Supply Voltage that is not 380V
 Data is based on standard criteria and may vary from project to project.

Layout Drawing

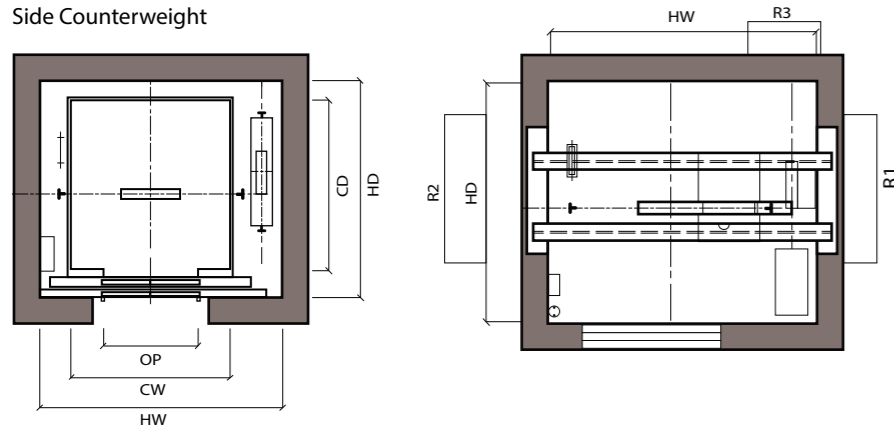
[Hoistway Plan]

Rear Counterweight

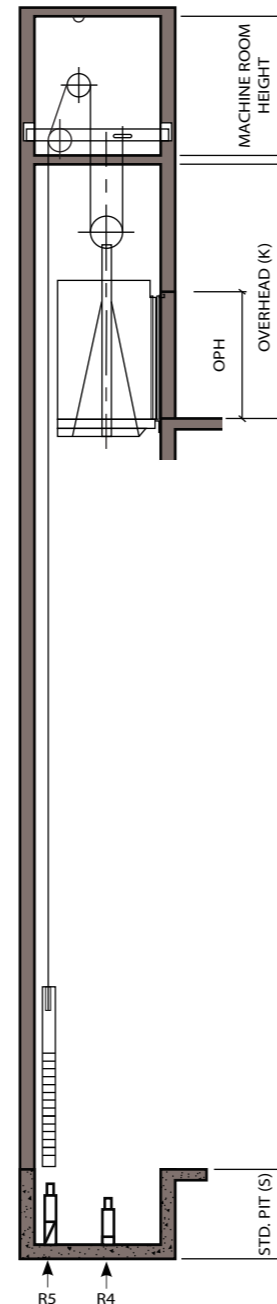


[Hoistway Plan]

Side Counterweight



[Hoistway Section]



Overhead, Pit & Machine Room Height

Speed(m/s)	Load(kg)	Overhead(mm)	Pit Depth (mm)	Machine Room Height(mm)
1.0	450 ~ 1050kg	4200	1350	2300
1.5		4300	1400	
1.75		4350	1450	
1.0	1150 ~ 1600kg	4250	1350	2500
1.5		4350	1500	
1.75		4450	1550	
2	800 ~ 1050kg	4500	1600	2500
2.5		4750	1850	
2	1150 ~ 1600kg	4600	1600	2500
2.5		4800	1850	

Basd on: RECES=3;CH=2400;
 When V<2m/s : CARRUNBY=200,CWTRUNBY=200;
 When V>=2m/s : CARRUNBY=250,CWTRUNBY=250;

Layout Dimension

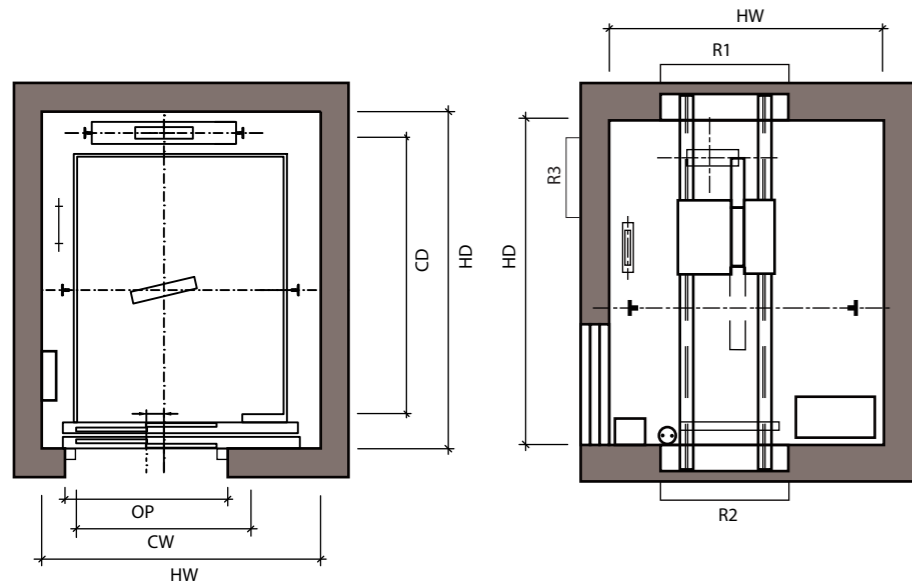
(Unit : mm)

Speed (m/s)	Capacity		Opening Width (mm)	Opening Type	Car Size		Hoistway Size		Machine Room Size		Reation Load (kN)					CWT Position
	Person	Load(kg)			CW	CD	HW	HD	MW	MD	Machine Room			Pit		
											R1	R2	R3	R4	R5	
1~1.75	6	450	700	CLD	1100	1100	1700	1750	1700	2450	28.5	15.4	NA	63.3	52.8	Back
	7	550	800		1200	1100	1800	1750	1800	2450	28.5	15.4	NA	63.3	52.8	
	8	630	800		1300	1100	1850	1750	1850	2450	30.0	16.3	NA	68.0	55.8	
	9	680	800		1350	1150	1900	1800	1900	2500	31.6	17.2	NA	73.3	60.1	
	10	800	800		1400	1350	1900	2000	1900	2700	35.7	18.9	3.1	82.8	67.1	
	12	900	900		1500	1400	2000	2100	2000	2800	38.3	20.5	3.3	87.7	70.0	
	13	1000	900		1600	1450	2150	2200	2150	2900	39.1	21.4	3.4	93.0	72.2	
	14	1050	900		1600	1500	2150	2200	2150	2900	39.1	21.4	3.4	93.0	72.2	
	15	1150	1100		1850	1350	2600	2100	2600	2800	29.3	29.3	5.6	127.9	105.1	
	18	1350	1100		1900	1550	2600	2400	2600	3100	33.6	33.6	7.3	148.4	121.4	
	21	1600	1100		2000	1700	2600	2450	2600	3150	34.4	34.4	7.9	165.2	133.1	
	6	450	700		1100	1100	1850	1750	2750	1750	28.5	15.4	NA	63.3	52.8	Side
	7	550	800		1200	1100	1950	1750	2750	1750	28.5	15.4	NA	63.3	52.8	
	8	630	800		1300	1100	2050	1750	2800	1750	30.0	16.3	NA	68.0	55.8	
	9	680	800		1350	1150	2200	1800	2900	1800	31.6	17.2	NA	73.3	60.1	
	10	800	800		1400	1350	2200	1900	2900	1900	35.7	18.9	3.1	82.8	67.1	
	12	900	900		1400	1500	2200	1950	2900	1950	38.3	20.5	3.3	87.7	70.0	
	13	1000	900		1450	1600	2300	2050	3000	2050	39.1	21.4	3.4	93.0	72.2	
	14	1050	900		1500	1600	2300	2050	3000	2050	39.1	21.4	3.4	93.0	72.2	
	15	1150	1000		1550	1650	2500	2250	3200	2250	29.3	29.3	5.6	127.9	105.1	
	18	1350	1000		1600	1850	2500	2400	3200	2400	33.6	33.6	7.3	148.4	121.4	
21	1600	900	1400	2400	2250	2800	2950	2800	34.4	34.4	7.9	165.2	133.1			
2.0~2.5	10	800	800	1400	1350	1950	2000	1950	2700	20.5	40.5	20.0	87.5	72.1	Back	
	12	900	900	1500	1400	2000	2100	2000	2800	22.4	44.5	22.1	91.6	74.2		
	13	1000	900	1600	1450	2150	2200	2150	2900	51.3	27.1	5.9	107.3	86.8		
	14	1050	900	1600	1500	2150	2200	2150	2900	51.3	27.1	5.9	107.3	86.8		
	15	1150	1100	1850	1350	2600	2100	2600	2800	31.9	31.9	6.9	130.3	107.7		
	18	1350	1100	1900	1550	2600	2400	2600	3100	35.7	35.7	7.9	148.4	121.7		
	21	1600	1100	2000	1700	2600	2450	2600	3150	36.4	36.4	8.5	165.2	133.3		
	10	800	800	1400	1350	2200	1900	2900	1900	42.9	22.6	4.9	87.5	72.1	Side	
	12	900	900	1400	1500	2200	1950	2900	1950	46.0	24.3	5.3	91.6	74.2		
	13	1000	900	1450	1600	2300	2050	3000	2050	51.3	27.1	5.9	107.3	86.8		
	14	1050	900	1500	1600	2300	2050	3000	2050	51.3	27.1	5.9	107.3	86.8		
	15	1150	1000	1550	1650	2500	2250	3200	2250	31.9	31.9	6.9	130.3	107.7		
18	1350	1000	1600	1850	2500	2400	3200	2400	35.7	35.7	7.9	148.4	121.7			
21	1600	900	1400	2400	2250	2800	2950	2800	36.4	36.4	8.5	165.2	133.3			

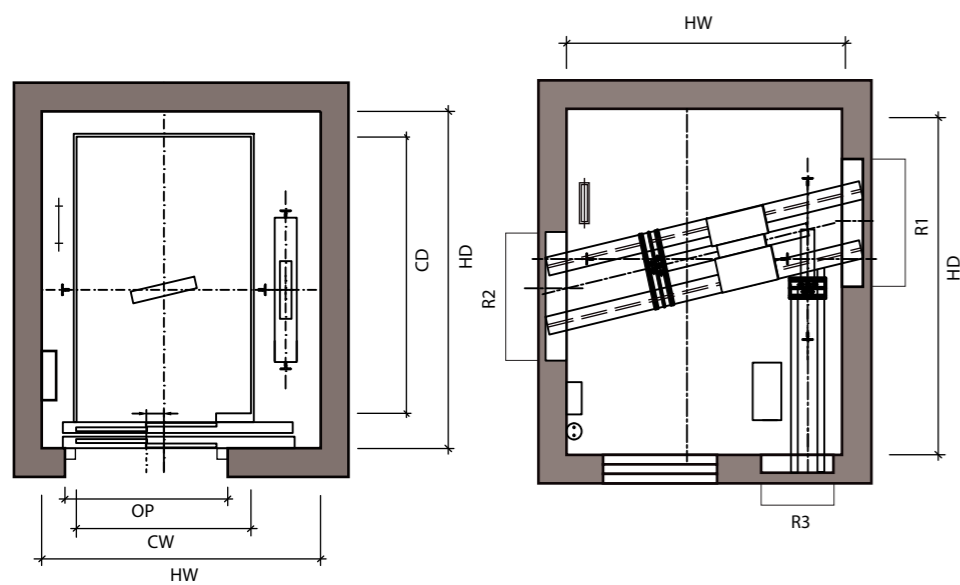
Note :
 * For Non-Standard Dimension, Please Contact Us.

Layout Drawing

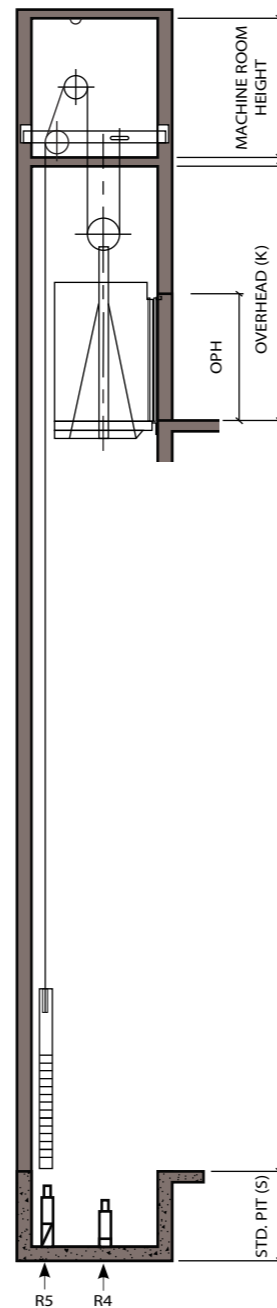
[Hoistway Plan]
Rear Counterweight



[Hoistway Plan]
Side Counterweight



[Hoistway Section]



Layout Dimension

(Unit : mm)

Speed (m/s)	Capacity		Opening Width (mm)	Opening Type	Car Size		Hoistway Size		Machine Room Size		Reaction Load (kN)					CWT Position					
	Person	Load(kg)			CW	CD	HW	HD	MW	MD	Machine Room			Pit							
												R1	R2	R3	R4	R5					
1~1.75	6	450	700	TLD	1100	1100	1800	1800	1800	2450	28.5	15.4	NA	63.3	52.8	Back					
	7	550	800		1100	1200	1800	1900	1800	2450	28.5	15.4	NA	63.3	52.8						
	8	630	800		1100	1300	1800	2000	1800	2450	30.0	16.3	NA	68.0	55.8						
	9	680	800		1150	1350	1800	2050	1800	2500	31.6	17.2	NA	73.3	60.1						
	10	800	800		1250	1500	1900	2200	1900	2700	35.7	18.9	3.1	82.8	67.1						
	12	900	900		1300	1600	1900	2300	1950	2800	38.3	20.5	3.3	87.7	70.0						
	13	1000	900		1450	1600	1950	2300	1950	2900	39.1	21.4	3.4	93.0	72.2						
	14	1050	900		1500	1600	2000	2300	2000	2900	39.1	21.4	3.4	93.0	72.2						
	15	1150	1000		1850	1350	2350	2050	2350	2800	29.3	29.3	5.6	127.9	105.1						
	18	1350	1100		1900	1500	2400	2200	2400	3100	33.6	33.6	7.3	148.4	121.4						
	21	1600	1100		2000	1700	2500	2400	2500	3150	34.4	34.4	7.9	165.2	133.1						
	6	450	700		1100	1100	1800	1800	2750	1800	28.5	15.4	NA	63.3	52.8		Side				
	7	550	800		1100	1200	1800	1800	2750	1800	28.5	15.4	NA	63.3	52.8						
	8	630	800		1100	1300	1800	1800	2800	1800	30.0	16.3	NA	68.0	55.8						
	9	680	800		1150	1350	1850	1800	2900	1800	31.6	17.2	NA	73.3	60.1						
	10	800	800		1250	1500	1950	1900	2900	1900	35.7	18.9	3.1	82.8	67.1						
	12	900	900		1300	1600	2000	2000	2900	2000	38.3	20.5	3.3	87.7	70.0						
	13	1000	900		1300	1700	2000	2100	3000	2100	39.1	21.4	3.4	93.0	72.2						
	14	1050	900		1300	1800	2000	2200	3000	2200	39.1	21.4	3.4	93.0	72.2						
	15	1150	1000		1300	1850	2100	2250	3200	2250	29.3	29.3	5.6	127.9	105.1						
	18	1350	1100		1300	2300	2100	2800	3200	2800	33.6	33.6	7.3	148.4	121.4						
21	1600	1100	1400	2400	2300	2800	2950	2800	34.4	34.4	7.9	165.2	133.1								
2.0~2.5	10	800	800	1250	1500	1900	2200	1900	2700	20.5	40.5	20.0	87.5	72.1	Back						
	12	900	900	1300	1600	1900	2300	1950	2800	22.4	44.5	22.1	91.6	74.2							
	13	1000	900	1450	1600	1950	2300	1950	2900	51.3	27.1	5.9	107.3	86.8							
	14	1050	900	1500	1600	2000	2300	2000	2900	51.3	27.1	5.9	107.3	86.8							
	15	1150	1000	1850	1350	2350	2050	2350	2800	31.9	31.9	6.9	130.3	107.7							
	18	1350	1100	1900	1500	2400	2200	2400	3100	35.7	35.7	7.9	148.4	121.7							
	21	1600	1100	2000	1700	2500	2400	2500	3150	36.4	36.4	8.5	165.2	133.3							
	10	800	800	1250	1500	1950	1900	2900	1900	42.9	22.6	4.9	87.5	72.1	Side						
	12	900	900	1300	1600	2000	2000	2900	2000	46.0	24.3	5.3	91.6	74.2							
	13	1000	900	1300	1700	2000	2100	3000	2100	51.3	27.1	5.9	107.3	86.8							
	14	1050	900	1300	1800	2000	2200	3000	2200	51.3	27.1	5.9	107.3	86.8							
	15	1150	1000	1300	1850	2100	2250	3200	2250	31.9	31.9	6.9	130.3	107.7							
18	1350	1100	1300	2300	2100	2800	3200	2800	35.7	35.7	7.9	148.4	121.7								
21	1600	1100	1400	2400	2250	2800	2950	2800	36.4	36.4	8.5	165.2	133.3								

Note :
* For Non-Standard Dimension, Please Contact Us.

Power Supply Plan

(380V, 3 Ph)

Speed (m/s)	Capacity		Motor Power Capacity (kW)	Elevator Current (A)		Heat Dissipation (kcal/H)
	Person	Capacity(kg)		Rated	Starting	
1.0	6	450	3.9	11.7	18.8	743
	7	550	3.9	11.7	18.8	743
	8	630	3.9	12.7	20.1	798
	9	680	4.9	13.4	21.8	849
	10	750	4.9	14.3	22.6	909
	10	800	4.9	15.0	23.4	953
	12	900	6.2	16.3	26.0	1,027
	13	1000	6.2	17.6	27.7	1,087
	14	1050	6.5	18.3	28.6	1,147
	15	1150	7.5	19.2	32.0	1,048
1.5	18	1350	9.0	21.6	35.6	1,077
	21	1600	10.7	24.8	40.5	1,210
	6	450	5.8	13.5	21.1	846
	7	550	5.8	13.5	21.0	846
	8	630	5.8	16.9	29.2	999
	9	680	7.4	17.9	30.8	1,055
	10	750	7.4	19.2	32.8	1,130
	10	800	7.4	20.2	34.0	1,181
	12	900	9.2	22.1	36.8	1,283
	13	1000	9.2	24.1	38.5	1,394
1.75	14	1050	9.7	25.0	39.6	1,448
	15	1150	11.2	26.5	46.0	1,351
	18	1350	15.8	30.3	53.1	1,443
	21	1600	18.7	35.0	59.2	1,614
	6	450	6.8	15.2	26.8	974
	7	550	6.8	15.2	26.8	974
	8	630	6.8	19.0	34.2	1,122
	9	680	8.6	20.2	35.9	1,185
	10	750	8.6	21.8	38.3	1,269
	10	800	8.6	22.9	39.7	1,326
2.0	12	900	10.8	25.0	41.9	1,427
	13	1000	10.8	27.3	44.2	1,563
	14	1050	11.3	28.4	45.5	1,611
	15	1150	13.1	30.3	53.7	1,561
	18	1350	15.8	34.7	62.4	1,670
	21	1600	18.7	40.2	69.5	1,870
	10	800	10.3	27.3	47.5	1,462
	12	900	13.3	29.7	50.4	1,527
	13	1000	13.3	32.4	55.0	1,700
	14	1050	13.3	33.7	56.4	1,766
2.5	15	1150	15	35.5	64.0	1,548
	18	1350	22.6	40.3	69.5	1,629
	21	1600	26.7	46.5	76.5	1,813
	10	800	13.1	32.2	58.5	1,646
	12	900	16.8	35.4	64.2	1,739
	13	1000	16.8	38.6	69.6	1,905
2.5	14	1050	16.8	40.2	71.5	1,978
	15	1150	18.8	43.0	80	1913.0
	18	1350	22.6	49.0	87	2014.0
	21	1600	26.7	57.2	104	2265.0

Note : When power supply is not 380V, current is calculated by the following formula.

$$I' = I * 380 / U'$$

I': System Current @ Power Supply Voltage that is not 380V

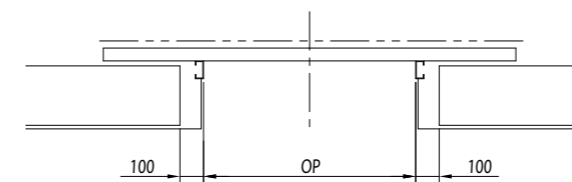
I: 380V Rated Current/Start Current

U': Power Supply Voltage that is not 380V

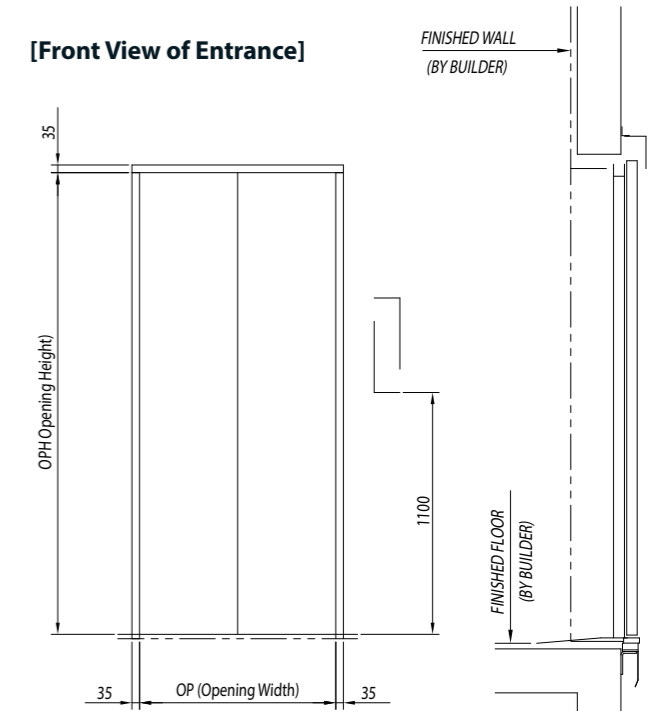
Data is based on standard criteria and may vary from project to project.

Narrow Jamb

[Plan View of Entrance]

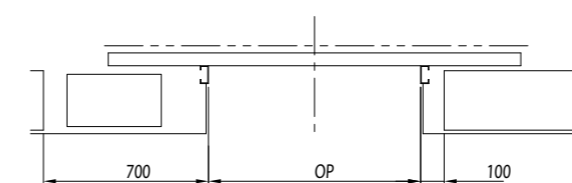


[Front View of Entrance]

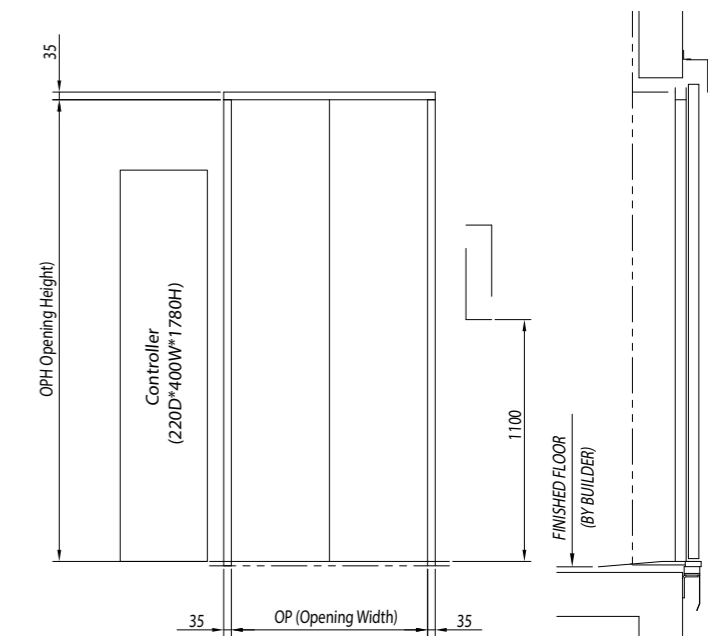


Narrow Jamb (SOLON® 2.0 & Top Floor)

[Plan View of Entrance]



[Front View of Entrance]

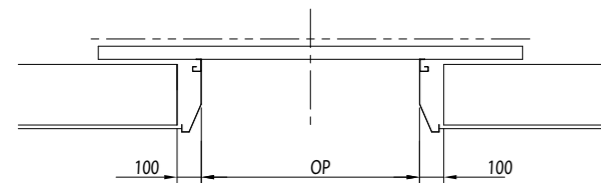


Note

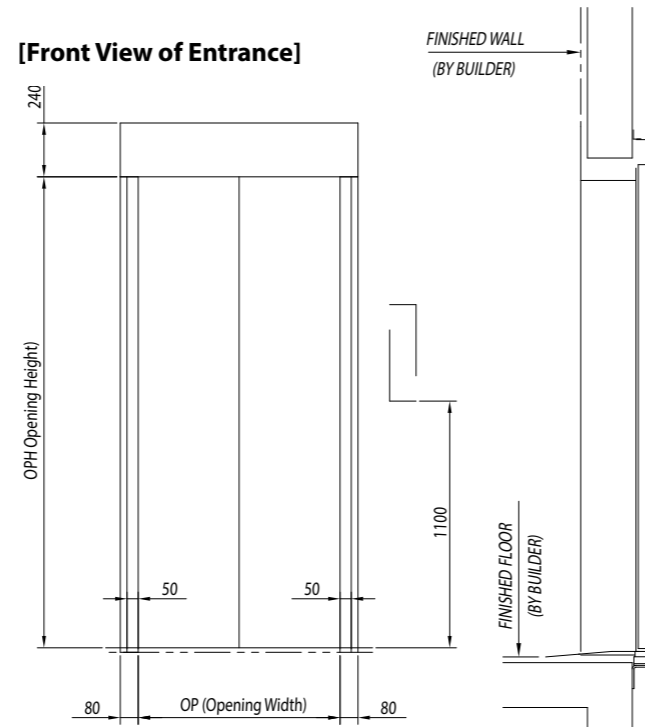
1. Landing door facade dimension for each floor which wide jamb installed must be same value.
2. Wall thickness for wide jamb (including decoration) for each floor which wide jamb installed must be same value.

Wide Tapered Jamb with Transom Panel

[Plan View of Entrance]

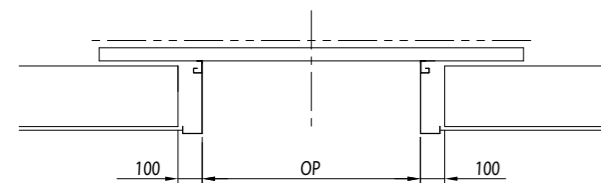


[Front View of Entrance]

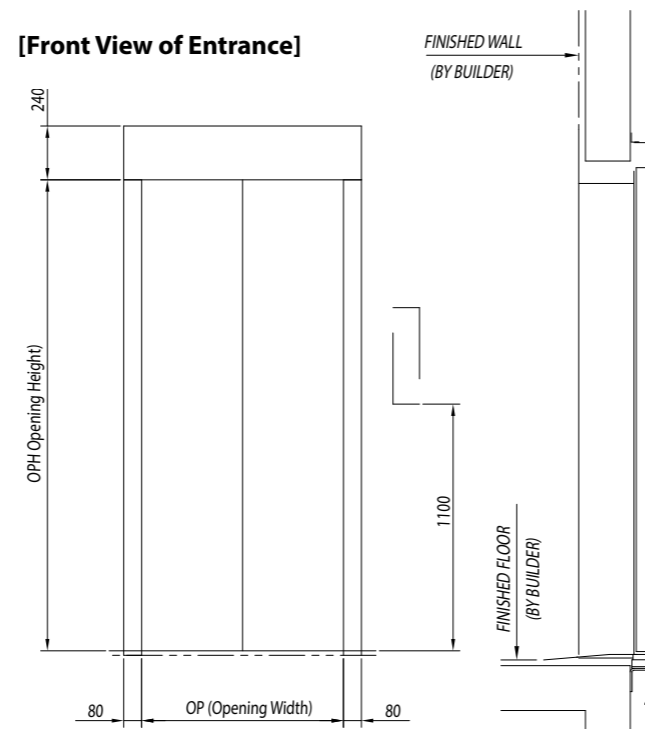


Wide Straight Jamb with Transom Panel

[Plan View of Entrance]



[Front View of Entrance]



Note

1. Landing door facade dimension for each floor which wide jamb installed must be same value.
2. Wall thickness for wide jamb(including decoration) for each floor which wide jamb installed must be same value.

Available Functions_ACRA™ 2.0 & SOLON® 2.0

Standard							
ACP Anti Crime protection	ADO Advanced Door Open	ALARB Alarm bell	ALCOR Advanced Releveling	CCC Cancel error calls	CFT Cafeteria mode	EDP Electronic door protection	CSP Close Torque protection
CUT CALL Block floor	DCBL/DOBL Door close/open button light	DCP Delayed car protection	DDT Independent car/landing door control	DLM Door lock shortcut measure	DOB/DCB Door open/close button	DTC Door time protection -close	DTO Door time protection -open
ELTU Emergency Light	EN-CCO Call opposition direction cancel	EN-HCC Hall call cancel	ERO Electrical recall operation	FCL Full collective operation	HDI/CDI Hall/Car direction indicator	HPI/CPI Hall/car position indicator	ICU3 Intercom unit
LNS Load non stop	LOBBY Floor of lobby	LR Car light & ventilation	LWS Overload protection	NTSD Near terminal slow down	OHT Drive overheat protection	PKS Parking operation	RLEV Releveling
RE-OP Hall door re-open	RIN Re-initialize	SE Start Equalize	SELF-BTI Self brake torque inspection	SLD Safety landing	TCI Top of car inspection	VSC Voice speech comfort	UCMP Uncontrolled car movement protection

Optional							
ANS Anti-Nuisance	ARO Automatic Rescue Operation	ATT Attendant service	ISC Independent service	DHB Door hold button	EFO Emergency fireman operation	EFS2 Emergency fireman service (manual)	Group Group Control
BMS1 Building monitor port	BMS2 Building monitor RS485	SSM Speech Synthesis Module	CCM Car arrival bell	GSCS Safety shoe & Light screen	AMS Area Monitoring Screen	EPO Emergency Power Operation	EQO Earthquake Operation
NSB Nonstop button	MIT Moderate incoming traffic	MOT Moderate out-going	MTR Monitoring room connected to the unit				

Operational Functions

Available Functions_MUSE™ 2.0

Standard							
ACP Anti Crime protection	ADO Advanced Door Open	ANS Anti-nuisance protection	CCC Car call cancel	CFT Cafeteria	COR Correction rescue run	CSP Close Torque protection	DCP Delayed car protection
DDT Independent car/landing door control	DOB/DCB Door open/close button	DTC Door time protection -close	DTO Door time protection -open	ECU Emergency car light unit	EMRO Electrical manual rescue operation	EN-CCO Call opposition direction cancel	EN-CK Door hold cancel
ERO Electrical recall operation	HDI/CDI Hall/Car direction indicator	HPI/CPI Hall/car position indicator	ICU5 Intercom unit	LNS Load non stop	LOBBY Floor of lobby	LWS Overload protection	NTSD Near terminal slow down
PKS Parking key switch	PRK Parking	RE-OP Hall door re-open	RIN Re-initialize	RLEV Releveling	SE Start Equalize	SLD Safety landing	TCI Top of car inspection
UCMP Uncontrolled car movement protection							

Optional							
ARO Automatic Rescue Operation	ATT Attendant service	BMS Building monitoring system	CCMS Car chime sound	DHB Door hold button	EFO Emergency fireman operation	EFS Emergency fireman service	EPO Emergency Power Operation
EQO Earthquake operation	ICUTYPE Type of ICU	ISC Independent service	MIT Moderate incoming traffic	MOT Moderate outgoing	MTR Monitoring room connected to the unit	NSB Nonstop button	RSSML Reset speech synthesis module language
SSML SSM language	Group Group Control	BMS1 Building monitor port	BMS2 Building monitor RS485	GSCS Moderate outgoing	AMS Area Monitoring Screen		

